



ZNSHINESOLAR

## ZXP6 | 60 Cells

### Polycrystalline PV module 235-255 Watt

Made with selected materials and components to grant quality, duration, efficiency and thorough outputs, the 60-celled polycrystalline modules by ZNSHINE SOLAR (power output 235 up to 255 Wp, black modules up to 250 Wp) represent a highly flexible solution for diverse installation types, from industrial rooftop plants to small home PV-systems or large ground surfaces. This allows you to produce clean energy whilst reducing your energy bill.

ZNSHINE SOLAR's 60-celled polycrystalline solar modules are tested and approved by internationally acknowledged laboratories, so that we can offer our customers a reliable and price-quality optimized product.



Hohe Effizienz

High module efficiency up to 15.67%



25 Years Output Warranty

Insured output warranty of 25 years



5400 Pa

Certified to withstand extreme static loads of 5400 Pa



PID free

Free from PID (Potential Induced Degradation)



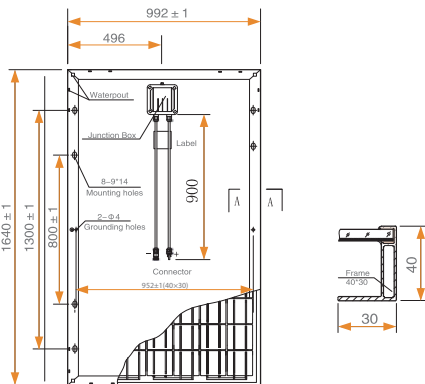
Extensive green certificates



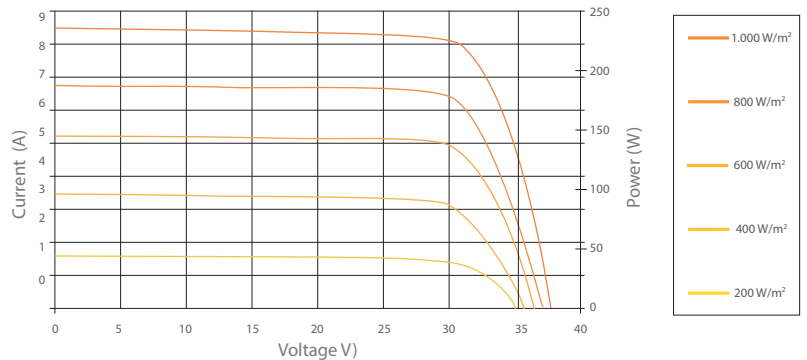
Also available from Japan production

ZNSHINE Europe GmbH  
Frankfurter Straße 71-75  
D-65760 Eschborn  
Tel: (+49) 061 9699 89 50  
Fax: (+49) 061 9699 89 529  
E-Mail: [info@znsinesolar.de](mailto:info@znsinesolar.de)  
For more information visit our website [www.znsinesolar.com](http://www.znsinesolar.com)

## Dimensions of the PV module



## I-V Curves of the PV module



## Electrical data<sup>1</sup>

	ZXP6-60-235/P	ZXP6-60-240/P	ZXP6-60-245/P	ZXP6-60-250/P	ZXP6-60-255/P
Nominal Power Watt $P_{max}$ ( $W_p$ )	235	240	245	250	255
Power Output Tolerance $P_{max}$ (%)	0 ~ +3	0 ~ +3	0 ~ +3	0 ~ +3	0 ~ +3
Maximum Power Voltage $V_{Mpp}$ (V)	29.55	29.75	29.95	30.15	30.33
Maximum Power Current $I_{Mpp}$ (A)	7.95	8.07	8.18	8.29	8.41
Open Circuit Voltage $V_{oc}$ (V)	37.38	37.55	37.72	37.89	38.08
Short Circuit Current $I_{sc}$ (A)	8.39	8.47	8.53	8.61	8.65
Module Efficiency $\eta_m$ (%)	14.44	14.75	15.06	15.37	15.67
Cell Efficiency $\eta_c$ (%)	16.26	16.64	17.02	17.44	17.79

## Mechanical data

Solar cells	Poly 156 × 156 mm
Cells orientation	60 (6 × 10)
Module dimensions	1640 × 992 × 40 mm
Weight	19.5 kg
Glass	High transparency, low iron, tempered glass 3.2 mm (AR-coating)
Frame	Anodized aluminum alloy. Frame and backside in alu or black
Junction box	≥ IP 65
Cables/ connectors	4 mm <sup>2</sup> , 900 mm, MC4-compatible
Number of diodes	3 / 6

## Temperature ratings

Nominal Operating Cell Temperature	45°C (±2°C)
Temperature coefficient of $P_{mpp}$	-0.42 %/K
Temperature coefficient of $V_{oc}$	-0.33 %/K
Temperature coefficient of $I_{sc}$	0.06 %/K

## Working conditions

Maximum system voltage	1000 V DC (TÜV)
Operating temperature	-40 up to +85 °C
Maximum series fuse	15 A
Maximum load (snow/wind)	5400 Pa / 2400 Pa

## Warranty information

- 10 years workmanship warranty
- 10 years at 90% power output
- + further 15 years warranty at 80 % power output

<sup>1</sup> Measurement Tolerance STC: ± 3% ( $P_{max}$ ), ± 10% ( $V_{max}$ ,  $I_{Mpp}$ ,  $V_{oc}$ ,  $I_{sc}$ ). Values at Standard Test Conditions STC (Air Mass AM 1.5, Irradiance 1000 W/m<sup>2</sup>, Cell Temperature 25 °C) | Remark: please read safety and installation instructions before using the product | Subject to change without prior notice © ZNSHINE SOLAR 2014 | Version: ZXP6-60-1405.E

## Packaging information

Modules per box	26 pcs. (40 mm)
Modules per 40'HQ container	784 pcs. (40 mm)
Modules per box	26 pcs. (40 mm)
Modules per 40'HQ container	728 pcs. (40 mm)